

Lighting

Heating

Cooling

Air conditioning

Blinds & Curtains

Courtesy Panel  
considering occupancy

Hotel PMS Information

# All-in-one

**Building management software for  
medium-sized and enterprise building  
automation projects**

Integrated hotel solution for any type of hotel  
project including management dashboard and  
control platform for all relevant hotel  
departments

## Advantages for hotel owners, facility manager, etc.

### Guest Room Management

1. Lighting control
2. Climate control
3. Shading
4. DND/MUR
5. Presence/Absence



### Software for hotel building

1. Gateway to all LMS & BMS hardware
2. Gateway to PMS/door lock
3. Room control for hotel guest on mobile
4. Visualization for hotel staff and guests
5. Master supervision for complete hotel buildings



**Guest  
Entertainment App, IP TV**  
**Multiple interfaces available**



1. Optimized guest comfort, security.
2. Connected services offering enhanced efficiency of overall management of the hotel building, hence reducing operational cost.
3. Single vendor point of contact for guest room hardware and software needed.
4. Integration of all main services e.g. BMS/Fire/Access/Door Lock/PMS in one system.
5. Unified master visualization for facility managers, maintenance staffs.

## Advantages for system integrators

### Guest room solution

Single hardware manufacturer for all GRMS devices



### Software for hotel building

1. Connectivity to all building automation systems including PMS
2. Offer multiple master visualization types
3. Technology handshake with other service providers
4. Offer enhanced features in automation of the hotel e.g., logic across connected systems, energy saving function for green hotel



1. Able to meet higher specification jobs and compete in the market with set players in hospitality segment
2. Additional revenue from software and integration to other systems
3. Position itself as technology consultant to improve brand image
4. No need to explore multiple hardware vendors for cross integration
5. Ability to offer customized visualization as per hotel's graphical/functional need

## Functional solution

Complete, integrated and flexible package for any type of hotel tailor-made

**Secure IP based solution**  
Device monitoring including status and warnings

**Separate function and HMI-Design for different departments**  
Front-office, housekeeping, engineering/IT, and management on PC, tablet, mobile

Air conditioning, heating, cooling, lights, blinds/shutter, sensors/actuators

Energy and resource management for operator

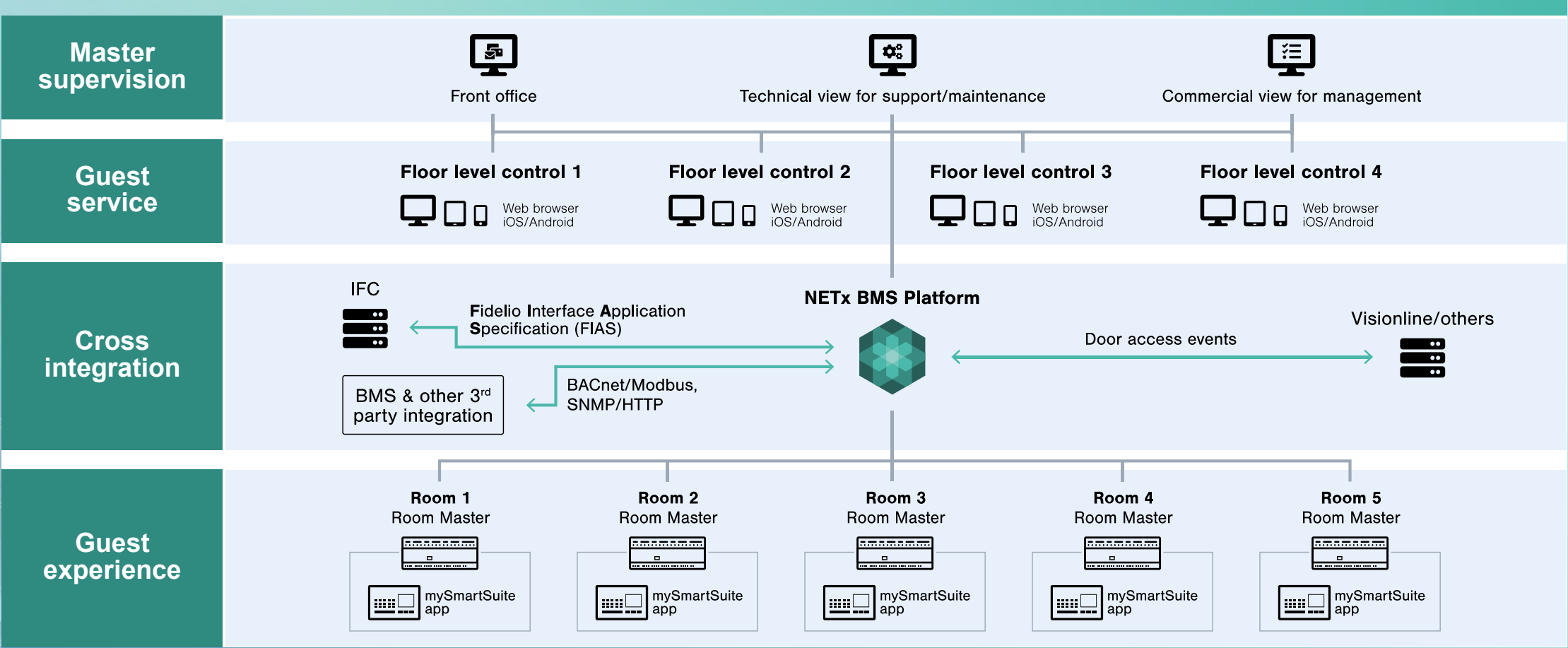
Display of room status, DND, MUR, Courtesy panel

Integrates guest rooms, common areas, surrounding

Secure guest mobile access for control GRMS in room – MySmartSuite (BYOD)



# Overview of connected hotel solutions



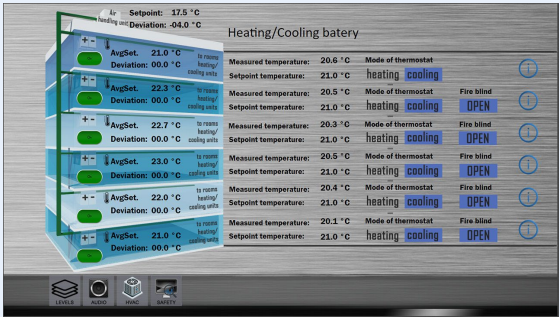
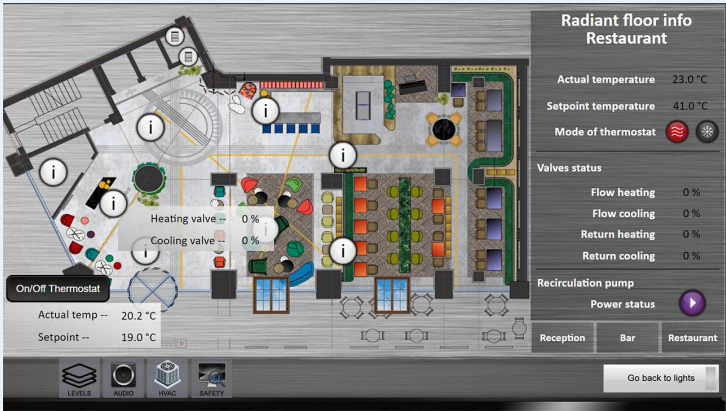
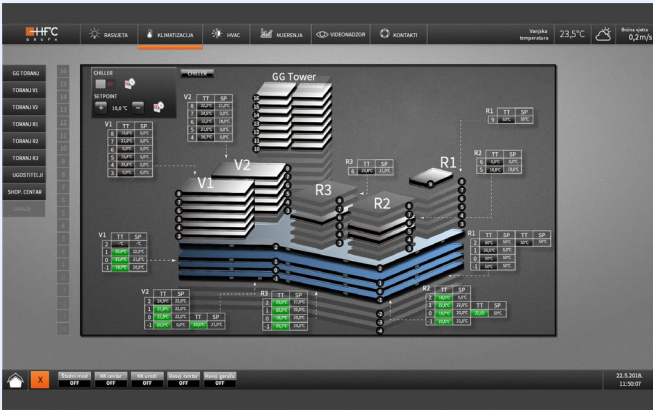
# Supervision and visualization – for facility managers

Master  
supervision

Guest  
service

Cross  
integration

Guest  
experience



# Supervision and visualization – for house keeping / maintenance

Master  
supervision

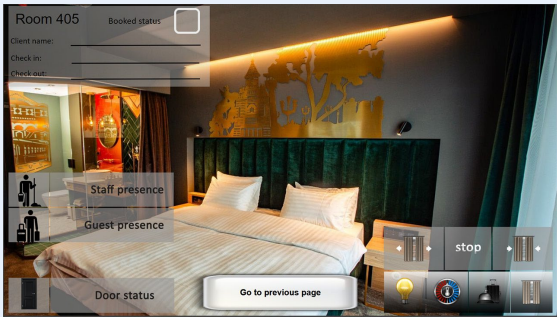
Guest  
service

Cross  
integration

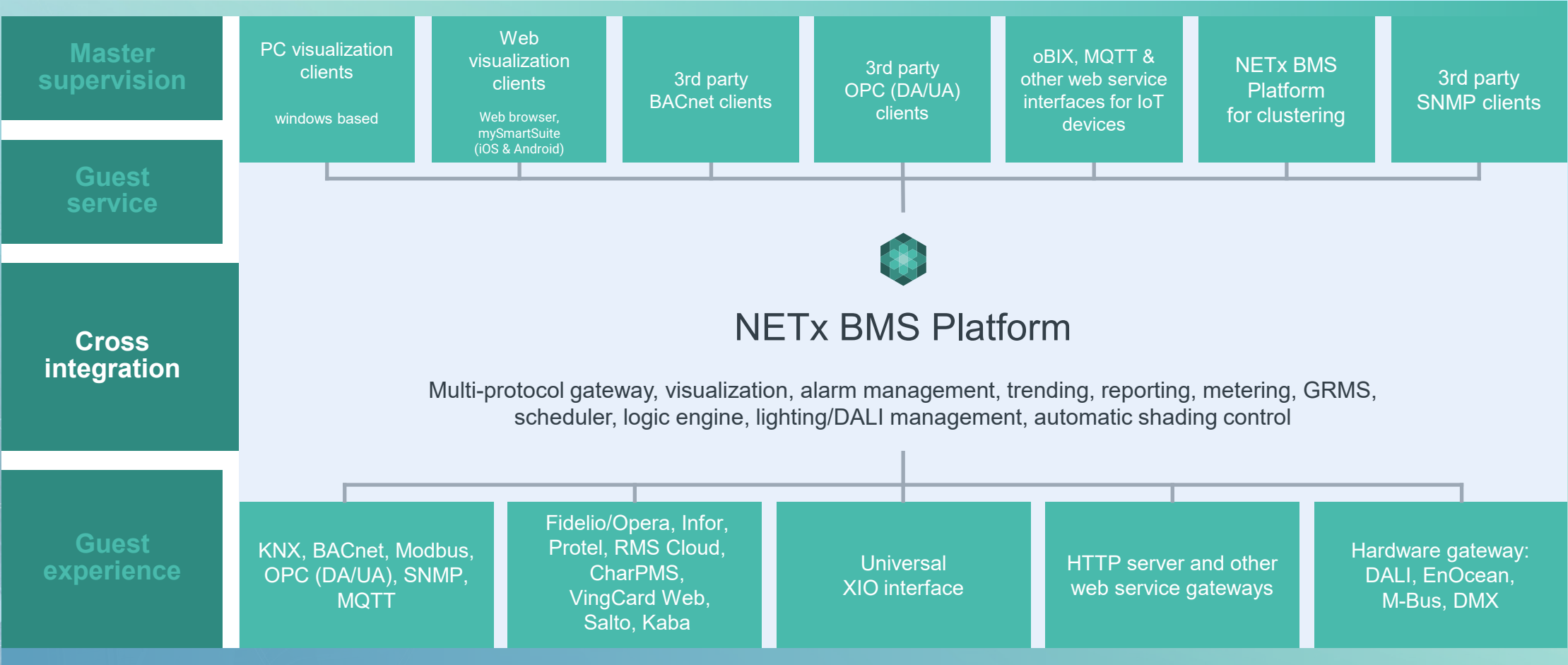
Guest  
experience

Level 1	Room 401	Booked status	<input checked="" type="checkbox"/>	Check in: 3/15/2021 12:00:00 AM	Check out: 3/16/2021 12:00:00 AM	Room 408	Booked status	<input type="checkbox"/>	Check in:	Check out:
Level 2	Room 402	Booked status	<input checked="" type="checkbox"/>	Check in: 1/28/2021 12:00:00 AM	Check out: 3/25/2021 12:00:00 AM	Room 409	Booked status	<input type="checkbox"/>	Check in:	Check out:
Level 3	Room 403	Booked status	<input checked="" type="checkbox"/>	Check in: 3/15/2021 12:00:00 AM	Check out: 3/17/2021 12:00:00 AM	Room 410	Booked status	<input checked="" type="checkbox"/>	Check in: 2/23/2021 12:00:00 AM	Check out: 3/25/2021 12:00:00 AM
Level 4	Room 404	Booked status	<input checked="" type="checkbox"/>	Check in: 3/15/2021 12:00:00 AM	Check out: 3/18/2021 12:00:00 AM					
Level 5	Room 405	Booked status	<input type="checkbox"/>	Check in:	Check out:					
Level 6	Room 406	Booked status	<input type="checkbox"/>	Check in:	Check out:					
	Room 407	Booked status	<input type="checkbox"/>	Check in:	Check out:					

Back



# Cross integration with complete hotel building eco system





# Supervision and visualization – for guest rooms

Master supervision

Guest service

Cross integration

Guest experience

VIOLA HOTELS

room 206

Welcome

Mrs. & Mr. Smith!

You have chosen to stay in one of Vienna's most charming and unique parts of the city. It is great to have you with us!

We trust you will find the time you spend here enjoyable and comfortable.

Room Control

?

VIOLA HOTELS

VIOLA HOTELS

VIOLA HOTELS

21,5°

22°

## Guest room management with mySmartSuite app

### NETx mySmartSuite

Easy access to the  
room visualization via QR code



Guests use their own  
smart phone  
(Android and iOS supported)



Check in and check out  
information incl. room change



# Full integration with hotel PMS

Web Manager

admin

NETX  
AUTOMATION

GRMS / Room status

Name ↑

Room 101

Room 102

Room 101

Status

Checked in

Description

Executive suite

Guest name

Jane Doe

Language

en

Click to print

Check out

DEMO HOTEL

Room

Room 101

Description

Executive suite

Booked by

Jane Doe

Network, September 2, 2020

Web Manger

Printed out

QR code generation via web manager

Core Server: online (grms-test) Database: connected Reporting Server: not connected Platform R1 Build 1990 08/27/2020 2:40:24 PM

Integrated with Fidelio/Opera,  
Protel, Infor, CharPMS & others

Detailed overview of  
all rooms

Extended guest  
information

Check in and check  
out information incl.  
room change

Room status  
(make up room, do  
not disturb)

Message  
processing

Oracle Fidelio  
certified

or as stand-alone solution

# NETx mySmartSuite - fully customized app for each room type

## Room control and secure visualization

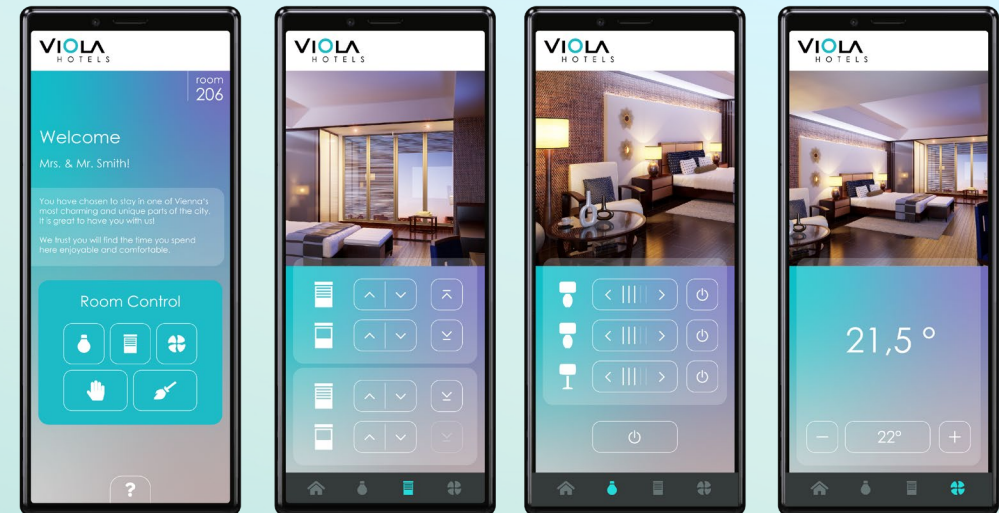
Only for the assigned  
hotel room

Valid only during the  
booked period

Available for Android and iOS

Automatically installed and  
configured via QR code

Control of lighting, shutters/blinds and HVAC in the room and everything  
else that is integrated via KNX, BACnet, Modbus, ...



Fully customizable user interface  
(integration of corporate identity, hotel logo)

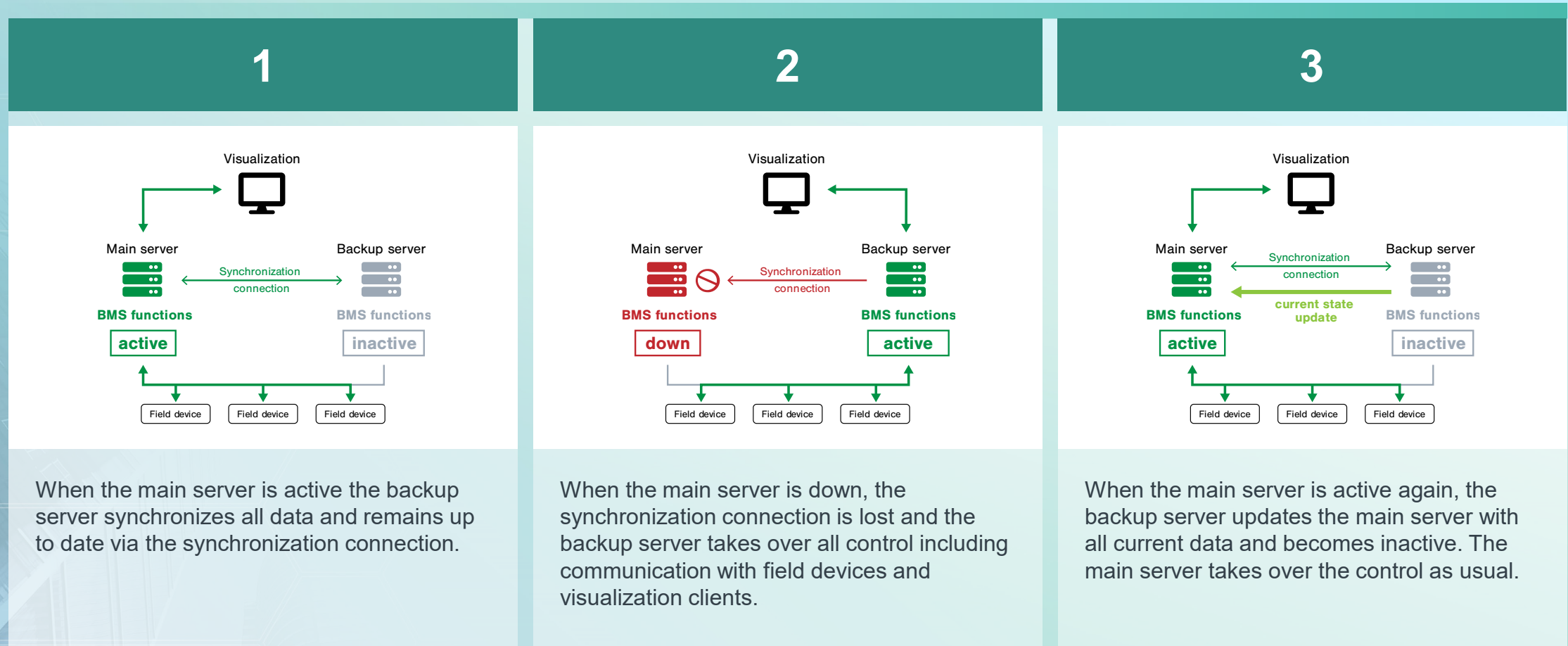
Room access QR codes are  
renewed for every guest

Access to room control is  
automatically revoked after checkout

Secure web-based visualization  
via TLS



# Main/Backup - for highest dependability using NETx solution



# Check list for a good estimation of software license type and price

Number of rooms	Data points (KNX group addresses, BACnet objects ...)
Hardware/protocols which needs integration	Controlled/monitored or both
PMS/third-party system brands	Possible door lock system
Guest room app control	3 <sup>rd</sup> party BMS integration details
How many guest app + other visualization	Fire alarm / DMX / UPS / power generator / electrical meters / water meters
Other areas of the hotel	



### Stefan Baumgartner

Responsibility: Global

✉ stefan.baumgartner@netxautomation.com

☎ +43 7242 252900 40

📱 +43 664 3424610

🌐 We can communicate in: English, German



### Bernhard Hödl

Responsibility: Europe

✉ bernhard.hoedl@netxautomation.com

☎ +43 7242 252900 69

📱 +43 664 2002605

🌐 We can communicate in: English, German



### Suvankar Das

Responsibility: Asia Pacific Region

✉ suvankar.das@netxautomation.com

📱 +91 983 4810117

🌐 We can communicate in: English, Hindi



### Julio Díaz García

Responsibility: Spain and South America

✉ julio.diaz@netxautomation.com

☎ +34 985 099 660

📱 +34 676 545 700

🌐 We can communicate in: English, Spanish

[www.netxautomation.com](http://www.netxautomation.com)